

Energy saving

National award for WPD

WESTERN Power Distribution was recently presented with a National Wales Award by the Buildings Research Establishment under its BREEAM (Buildings Research Establishment Environmental Assessment Method) Scheme.

BREEAM Awards recognise and reward the design and construction of the highest scoring buildings certified under BREEAM that year – a 'best of the best' approach.

Western Power Distribution's most recent award, presented by Jane Davidson AM, Minister for the Environment, Sustainability and Housing, recognises the success of its depot in Llandrindod Wells in the industrial category.

David Withers, property manager at WPD, said: "This is the second BREEAM award for this building and having an Excellent rating was a pre-qualification to even be considered for this National Award. "So it is very rewarding for our environmental commitment to be



independently assessed and rewarded in this way."

The building maximises the use of renewable energy and energy efficient technologies in its design.

Some of the key features include the installation of a biomass boiler, natural ventilation and a leak detection system that is capable of identifying major leaks, both within the building and between the building and site boundary.

Matthew John, BREEAM assessor, added: "Achieving a BREEAM Excellent rating for the Western Power Distribution unit was greatly assisted by strong communication through the design team and the early involvement of the assessor."

WESTERN POWER DISTRIBUTION

Serving the South West and Wales
Gwasanaethu'r De Orllewin a Chymru



David Withers, property manager at WPD, accepting the National Award from environment minister Jane Davidson

Arbed energy saving programme underway

Warm Wales – Cymru Gynnes (WWCG) is delighted to have been commissioned by a number of social housing providers to help deliver schemes throughout Wales which are being funded under the Welsh Assembly Government's Arbed programme.

Arbed (meaning 'save') is a £30m fund sourced primarily from the Strategic Capital Investment Fund (SCIF) and the UK Department of Energy and Climate Change (the initiative is also known as the Strategic Energy Performance Investment Programme).

Phase 1 of Arbed (2010-11) is focused specifically on energy efficiency improvements to homes in economically deprived communities within Wales.

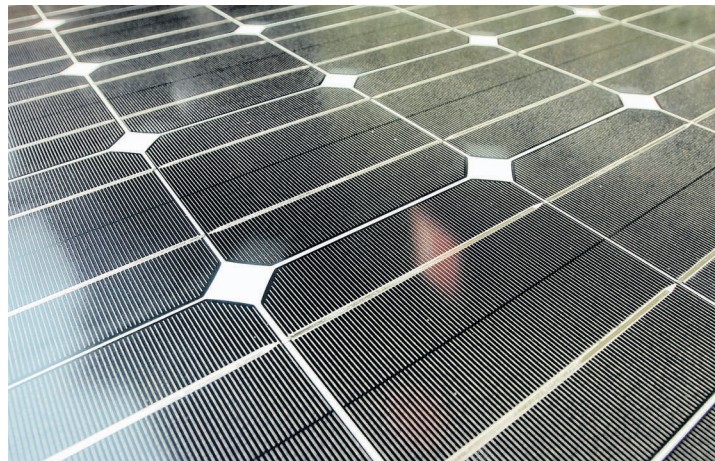
This groundbreaking scheme is intended to tackle climate change, help eradicate fuel poverty and boost economic development and regeneration within Wales.

Most importantly the improvements to the housing stock under the Arbed scheme will ensure that long-term solutions are put in place to future proof Welsh homes.

Wales is leading the way in the UK with this innovative scheme and WWCG and its partners will not only be focusing on helping those most in need by reducing fuel costs and alleviating fuel poverty, but also making local job creation and training a key part of each and every project.

Also key to this scheme, along with the generation of local training and employment, are the economic opportunities for Welsh businesses.

The design, manufacture, distribution, installation and maintenance of energy efficiency measures and renewable



Installing renewable technologies is a priority under the Arbed scheme

energy/heat technologies is a priority, and will be sourced locally.

As a forward thinking and highly successful community interest company WWCG is able to access grant aid under Carbon Emission Reduction Target (CERT) and the Community Energy Savings Programme (CESP) from a number of sources.

Our grant funding enables us to provide innovative financial solutions for initiative schemes such as Arbed, maximising the benefits to each and every community involved.

Working with communities WWCG has already delivered more than £30m of

investment into Wales, with funding obtained from a range of partners creating energy savings of more than £52m.

WWCG is committed to delivering a wide range of measures, in the area of sustainable energy and regeneration, in support of Assembly policies to help and assist Welsh residents in every way possible.

Our aim is to ensure that sustainable housing ceases to be seen as a novelty, but instead becomes the everyday solution to tackle climate change and fuel poverty.

Our services include:
■ training, knowledge and skills development;
■ professional advice, design and project

management services; and
■ access to funding sources.

At this time of rapid change, there is a need for specialist support and practical advice. Our dedicated team is supported by a network of specialist associates, including:

- the Design Research Unit of the Welsh School of Architecture;
- BRE Wales;
- the European Housing Ecology Network, along with other specialists.

With these resources, we can offer a range of services for new-build and retrofit schemes:

- the consultancy service will provide specialist technical support and advice and guidance to social landlords and developers;
- we are offering to design and develop a range of housing projects, in partnership with local authorities, registered social landlords and developers;
- we will offer to design, build and project manage new-build housing to code 5 and 6 of the code for sustainable homes.

■ For more information visit www.warmwales.org.uk or call us on 0845 0261 135



**WARM WALES
CYMRU GYNNES**